

Handling of collection for returnable transport packaging (RTP)

Dear Sir/Madam, Should there be any divergence with your collections in terms of quantity or type of RTP, please be so kind as to get in touch with one of our contacts at once:

WBG-Pooling GmbH:

Switchboard: +49 (0)5491 / 9792-0

E-mail: leergutlogistik@wbg-pooling.de

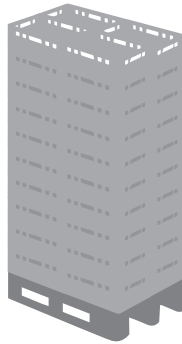
Standard packing plan

| | Class A / slot | Packed on | Class A / Full trailer 33 SP | Class C / slot | Packed on | Class C / Full trailer 33 SP |
|-------------------------|----------------|---------------|------------------------------|----------------|---------------|------------------------------|
| E1 containers | 68 pcs. / slot | 33 H1 pallets | 2244 pcs. / trailer | 68 pcs. / slot | 33 H1 pallets | 2244 pcs. / trailer |
| E2 containers | 40 pcs. / slot | 33 H1 pallets | 1320 pcs. / trailer | 40 pcs. / slot | 33 H1 pallets | 1320 pcs. / trailer |
| H1 pallets | 14 pcs. / slot | - | 495 pcs. / trailer | 14 pcs. / slot | - | 462 pcs. / trailer |
| Big Boxes grey | 3 pcs. / slot | - | 78 pcs. / trailer | 4 pcs. / slot | - | 104 pcs. / trailer |
| WBG-Pooling Dolav grey | 3 pcs. / slot | - | 78 pcs. / trailer | 4 pcs. / slot | - | 104 pcs. / trailer |
| WBG-Pooling Big Box red | 3 pcs. / slot | - | 78 pcs. / trailer | 4 pcs. / slot | - | 104 pcs. / trailer |

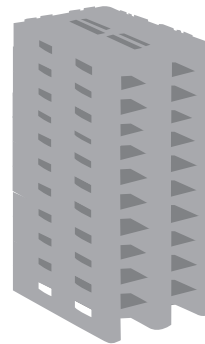
E1 containers



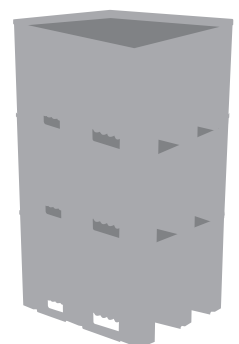
E2 containers



H1 pallets



Big-Boxes

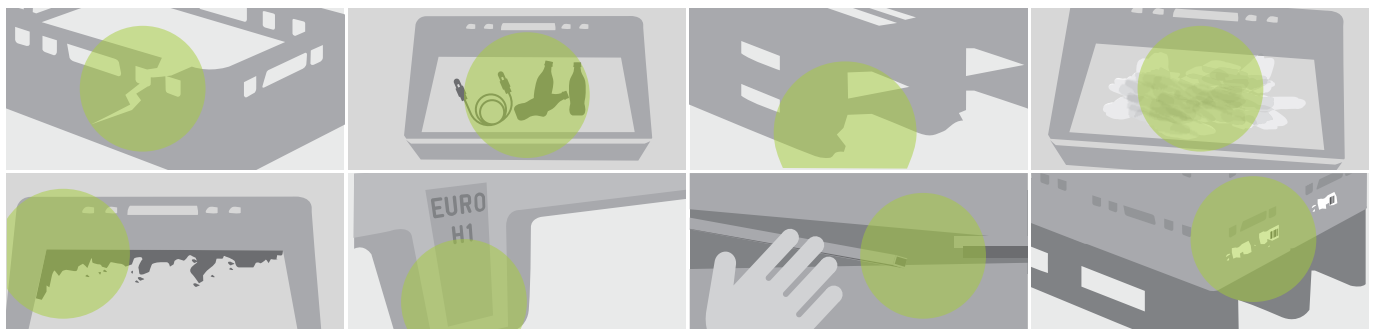


Classification C (not cleaned)

Variations in colour also possible with **H1 pallets**. H1 pallets must additionally display GS1 or EHI test mark.

E containers + Big Boxes:

- › Minimal traces of organic and inorganic residues possible
- › **Not** free from adhesive labels
- › **Free** from external damage



Such containers must not be dispatched (do not meet Class C)